

2022 HIGHLIGHTS

Sinal do Vale
MATA ATLÂNTICA-BRASIL



@sinaldovale



sinaldovale.org

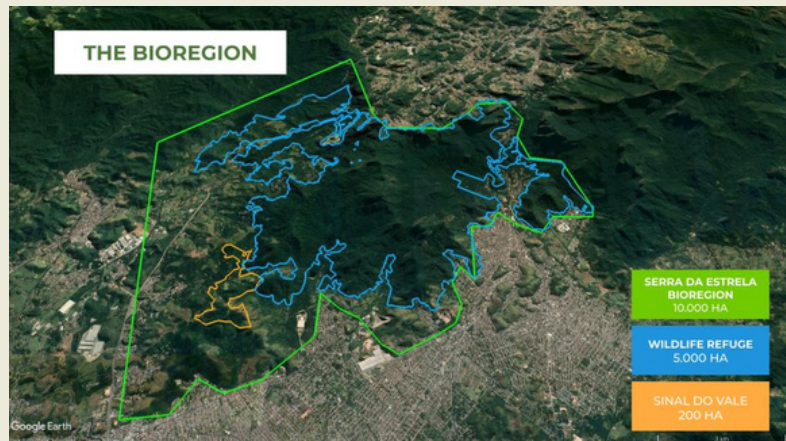


/sinaldovale

THIS YEAR

ends with the consolidation of Instituto Sinal do Vale (SINAL) as a space that develops projects, products and services to strengthen a local regenerative economy model to be disseminated through partnerships in the Serra da Estrela bioregion.

The bioregion comprises the Serra da Estrela Wildlife Refuge and its buffer area, covering a territory of approximately 10,000 hectares.



Our vision is that over the next ten years, it will be possible to demonstrate that community-led development through bioregional units, whose identity is marked by the natural ecosystem prevailing in the area, can contribute to reversing the current critical state of destruction of the planet.

Here are some of this year's highlights.



Florestas do Amanhã and Ecosystem Restoration within SINAL

SINAL is part of the first stage of projects approved for the implementation of the largest public policy for environmental compensation in the State of Rio de Janeiro. There are 5000 hectares to be implemented in the area around Guanabara Bay.

Our contribution is 30 hectares with the implantation of 40,000 seedlings, which was completed in early 2022, respecting parameters of diversity and a combination of native species for the restoration of the Atlantic Forest. Now we have transitioned into the maintenance phase, which involves replacing seedlings, pest control, firebreak and fence maintenance which will continue until 2025.



An important goal for 2022 was to onboard our community to the guardianship of this restoration process, since it was the first time a reforestation operation of this magnitude happened in the area. In this sense, we started the year with an event at the peak of Rio View trail for our community. Paragliders from all over the State of Rio participated, as well as local hikers and mountain bikers. Our intention is to celebrate recreation activities and sports that are compatible with nature and can coexist with the restoration of ecosystems!



In addition to the partnership with the Secretary of Sustainability and Environment of the State of Rio de Janeiro and the IDG (Instituto de Gestão), responsible for implementing Florestas do Amanhã, Sinal do Vale is open to donations for our nursery, for planting of seedlings and their maintenance. This year we received donations from One Tree Plant, Canva and individuals through the Global Giving platform.

Madre Frutos

In 2022, our green jackfruit startup continued to grow, with improvements to the factory creating wider spaces, comfort and safety for the work of the 12 women from the community who come to process jackfruit every year during the harvest season.

Our production capacity today is 10 tons of jackfruit. We have sold jackfruit products at local fairs, restaurants in Rio de Janeiro and supermarkets such as Natural da Terra. We are also part of a network of activists that this year helped us to explore new possibilities.

Our goal for 2023 is to also reach government funded institutions like schools and hospitals through legislation that prioritizes the purchasing of locally sourced products.



Caminho do Recôncavo da Guanabara

Our long distance trail was established as our biggest initiative of 2022! Since the beginning of SINAL, we have dreamt of uniting active restoration centers in our region, creating a green corridor of initiatives that advocate sustainable local development and conscious tourism.

We inaugurated the Caminho do Recôncavo da Guanabara project on June 6, the week of the 30th anniversary of the Earth Summit in Rio was celebrated! the ECO-92, marked the life of a generation, and was an inspiration for the foundation of SINAL and for the integrated vision of the social, environmental and economic development that permeates all our projects and initiatives.



 [video of the trail](#)

The trail project was made possible joining forces with Movimento Viva Água, led by Fundação Grupo Boticário, which sponsored and supported through the mobilization of local partners, the layout of the first 50 kilometer stage of the trail, which connects Sinal do Vale to Ecovila El Nagual; the Atlantic Forest Path, with Francisco Schnoor, and the environmental education center Moleque Mateiro, which introduced us to a fascinating group of Atlantic Forest activists who are opening paths for the protection of biomes with education and opportunities for community-based tourism.



The network of nurseries ProMudas Rio, is also one of our main partners in developing the Trail. The Wildlife Refuge of Serra da Estrela, the Conservation Unit through which the first part of the Trail goes, is our main source of knowledge of biodiversity protection.

We have been working on deepening our understanding of the historical context of the region. We learnt that in the past, it was crossed by rivers that allowed the flow of regionally sourced agriculture products through to the Port of Serra da Estrela. Slaves were disembarked through this port in the 18th and 19th centuries who came to work on the farms. We want to rescue the historical significance of the area through the name of the project, Caminho do Recôncavo da Guanabara, as the region was originally known, hoping to draw the attention of thousands of users who will make the journey to important cultural, social and environmental aspects of this territory. Our partnership with the historian Philipe Moreira and the Quilombo Quilombá are essential to bring attention to the historic contribution of the afro-descendant population in the territory.

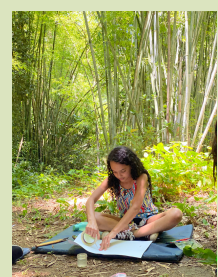
In 2023, developing the Long Distance Trail will be one of our main areas of focus, including completing the next 50 km stretch that will take us to the Guapiaçu Basin Reserve (REGUA): an exemplary initiative led by our partners Nicholas and Raquel Locke with approximately 11,000 hectares of forest with native species reintroduction programs.



Agents of Transformation

We started the year with an agroforestry course in partnership with Agroicone and Ecovila El Nagual, strengthening the SiAMA (Atlantic Forest Agroforestry Systems) network. A total of 130 participants learnt the basics for implementing agroforestry systems. The hectare we worked on is part of the Florestas do Amanhã project, an area specially designated for alternative restoration, and will continue to be used for educational purposes in the coming years.

The Sinal das Crianças program was very active as well, hosting children from local schools and initiatives in Rio such as Rocinha Creative English and the Julio Otoni Community Center in the Julio Otoni favela.



As part of the Homes for Humanity network, Sinal do Vale was one of the cases presented in the first international course for leaders in the integral development field. There were 14 classes with a follow-up process so that new agents can open up to the possibility of integrating culture, education and conscious action on the planet.

Neo-rurals Webinar series

Sinal do Vale has acted as one of the main locations for the BMW Foundation's meetings for several years and as a member of the SDG Places (places where the Sustainable Development Goals are implemented). With the aim of giving visibility to how this vision unfolds in practice, Thais Corral and Rodrigo Baggio, social entrepreneur at RECODE, organized in their capacity as BMW Foundation Responsible Leaders a series of four webinars exploring what is known as the Neo-Rural movement, establishing spaces with socio-environmental significance.

We had the honor of hosting pioneers such as the indigenous leader, Ailton Krenak; the creator of the Instituto Visão Futuro, Susan Andrews; Roberto Klabin, the co-founder of one of the largest Ecological Refuges in the Pantanal, the Caiman project; Claudia Baumgratz from the Ibitipoca Commune, in addition to BMW Foundation Director Markus Hipp and SDG Places Director Thobias Hipp. The Responsible Leaders network, as well as the Ashoka and Catalyst2030 groups participated in the live sessions.



[🔗 The content is available in our Youtube Channel!](#)

Resilient Infrastructure

Through our work with the municipality, public lighting was installed throughout the whole 3 kms of our street Rua da Cachoeira, improving access for staff and guests, in addition to encouraging the trust and engagement of neighbors on the Sinal do Vale campus. We are also actively engaged with our neighbors working to improve access roads, trash collection points and security.

Boteco da Floresta

This year with the adaptation of our first jackfruit processing workshop, Boteco da Floresta was born as a processing lab and shop for all the produce and PANCs growing at SINAL, thanks to the knowledge of Rosilene Mathias, an alumn of the Terrapia Culinary School.

Today we open our shop for our events and host a small class where participants can learn more about how to improve their cooking and diet in a simple way, reducing waste and increasing health.



Hospitality

In 2022 our campus with its attractions came to life again after the pandemic. We held 25 events and rented the houses with temporary accommodation.

The inauguration of the Caminho do Recôncavo da Guanabara project led to the arrival of more than 60 people in June and a press trip at the end of the year with journalists and influencers.

We also had a very special visit by Helmy and Konstanze Abouleish, founders and directors of SEKEM in Egypt. The visit closed out the year on a high note, as SEKEM has always been an inspirational project and continues to be a reference for Sinal do Vale. We recorded a conversation about the SEKEM and SINAL partnership, and about their work championing carbon credits from small regenerative agriculture properties, presented recently at the COP 27. The video is available on our Youtube channel.



Activando la Regeneración Network

The fourth edition of the Activando la Regeneración meeting surprised us this year with a record number of 45 participants. The initiative started in 2017 when Thais, Pedro Tarak, co-founder of Sistema B in Latin America, and Alex Prior, co-founder of Guayaki Yerba Mate thought of bringing together entrepreneurs and leaders of regenerative initiatives in Latin America. The purpose of the meetings is to inspire, catalyze collaboration and learning across the network.

This year's lively participation showed that the network's purpose is more alive than ever and many collaborative initiatives emerged from the week-long event.



Organizational Development

The unfolding of Sinal do Vale's vision and mission over the last decade and the alignment of our purpose with the needs of current times called for an organizational development revision and restructuring.

With the support of the German international cooperation agency GIZ, we undertook this process over the last six months with the dedication of Ana Christina Maia and Adriana Boscov, part of our advisory board. We have an action plan to develop people and our actions in a more planned way, with goals to be met in the next two years.



Added to this process was the generous contribution of Christina Carvalho Pinto, specialist in Branding and Communication, from the Consulting Agency Hollun, who for four months carefully analyzed our audiences and our communications, training the team on how we can improve and expand. Our new branding strategy will help SINAL expand its audiences and sources of economic viability in 2023.

Looking forward to 2023!

The consolidation of our projects and services next year will bring us many new opportunities to connect with you.

In this very special year of growth, we are very grateful for our friends who have believed in our work and supported our actions!

**Happy holidays and a
regenerative 2023!**



@sinaldovale



/sinaldovale



sinaldovale.org